

What Our Customers Are Saying!

"I can't believe the water quality and lack of constant water monitoring needed now that we use Spa Solution. Thank You!"
Shirley A. Ontario

"A wonderful product! There is no chemical odour, we have clear water, and I'm telling all my friends and neighbours with spas about this great product."
Cindy M. Ontario

"This is the answer. I was looking for a product that would reduce the maintenance and associated cost of operating my spa and Spa Solution has done it!"
Frank J. Alberta

"Before I found your product, I was ready to sell my hot tub because of dermal reactions. Luckily, we found Spa Solution through our local spa dealer. With some hesitance, we decided to try it. What a lucky break! We went home and followed the simple instructions and were back in our hot tub soon."
Wallace G. Ontario

"Thanks...! My wife and I can now use our spa every day without suffering skin irritation. What a great product!"
Terry L. British Columbia

"Thanks...I just wanted to say your product is working great for us. My wife wouldn't use the hot tub before... Now I can't keep her out of it. I look forward to trying any new products you develop for the future."
T.S. Barrie, Ontario

"This truly is a life saver for us. Since our daughter was little, she would continually break-out in hives after being in a hot tub or public pool with chlorine. After buying our current house with a spa she's tickled pink. She can now enjoy it with her teenage friends. Great Stuff!!!"
Nicole V. Chilliwack BC



More Great Benefits with Spa Solution®

- Protects and preserves your spa equipment and bathing wear
- Is Compatible with ozone, chlorine and bromine
- Eliminates foaming
- No chemical odour
- Benefits you and your environment

Designed for Canadian use, this advanced, high quality enzyme formula is proven to be an effective alternative to the many harsh spa chemicals that may be in your current spa water regimen.

Enjoy your spa and preserve your leisure time.



www.spa-express.ca
1.780.934.2817

Satisfaction Guaranteed or Your Money Refunded!

Made in Canada 

Your Spa Solution® Contact is:



9817 47 Avenue NW
Edmonton, Alberta
T6E 5M7

Phone: 780-934-2817
E-mail: sales@spa-express.ca
Web: www.spa-express.ca

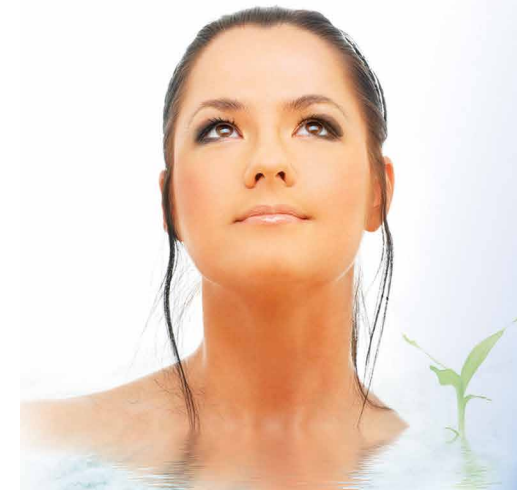
Spa Water Maintenance Made Easy

The Original
Spa
Solution
www.spa-express.ca



The Easy Way to Maintain Your Spa

An Environmentally friendly, non-toxic, non-allergenic, enzyme based spa water conditioner that gives you clean, clear water for up to three months



Naturally
Balanced
Luxuriously
Soft

Spa Water Maintenance Made Easy!

The original **Spa Solution**® is a Canadian made product that will make spa water maintenance easier. This is an advanced, proven and natural enzyme formula that eliminates constant water balancing and reduces the need for harsh chemicals. Most important is that one application will give you clean, clear, managed water for up to three months.

Simple Spa Water Balancing

The only time you need to balance your spa water is at initial start-up with our proprietary formula. Simply check your total hardness and alkalinity levels with the original water fill. The pH levels are automatically adjusted with our **Spa Solution**® product.

Reduces Toxic Chemicals in Your Spa

Designed for Canadian use, our advanced, high quality, enzyme formula is proven to be an effective alternative to the many harsh spa water chemicals that are currently in use. Treating spa water with enzymes is a safe, natural way of maintaining a clean environment. Since **Spa Solution**® is not a registered sanitizer with Health Canada, the industry recommends that a minimum level of 2 to 3 ppm of sanitizer be maintained in the spa water. However, we recommend that you use a DiChlor sanitizer and let **Spa Solution**® do the rest. It simply transitions your spa from chemicals only to natural enzymes.

Provides Sensuously Soft Spa Water

Spa Solution® has added Glycerin in its formula that soothes the skin leaving it soft and comfortable. Soaking in a spa treated by the **Spa Solution**® is wonderful, sensual and has a lasting feeling.

Getting Started With Spa Solution®

If your spa has been in use using traditional spa chemicals and balancers, you will need to remove all excess build-up of contaminants in your spa's system. To do this, you need our compatible product **Spa Purge**. This product is designed to effectively remove these contaminants. **Spa Purge** is another natural enzyme product that will not harm the environment. You may wish to use **Spa Purge** once each year, at a time when you replace the spa water. We recommend that you do not use the spa during the purging procedure.



Step One: Purge

1. Remove your cartridge filter and any sanitizer dispenser. During the cleansing process, keep your filter out of the spa. We also recommend that you clean or replace your filter at this time.
2. In your existing spa water, pour in one 480 ml. bottle of **Spa Purge**. If the spa is five years old or more, use two bottles.
3. Let the spa water circulate, with water at least 32°C/90°F for a minimum of eight hours per day over a minimum of five days.
4. After the five days or more, drain the water and flush the spa with fresh water. Put a hose in the filter area and fill the tub up to top of the foot-well area then drain and clean the well. Place the hose at the jets and gently flush backwards. This will aid in completely flushing contaminants from your spa.
5. Clean the underside of your spa cover, either with soap and water or some **Spa Solution**®. If the cover has any breaks or tears, we recommend it be replaced.

Step Two: Spa Solution®

1. Re-Fill your spa, preferably using our **Spa Solution**® **0.5 micron carbon black Pre Filter**, then bring water to temperature and add one 480 ml. bottle of **Spa Solution**® to spas up to 2,000 litres in volume. Add your favourite sanitizer as desired.
2. This is the one time to check your water balance. Total hardness should be in the 150 to 250 ppm range and Alkalinity should be between 80 and 120 ppm. Adjust your water to be within these ranges. **Spa Solution**® will automatically maintain your pH level between 7.8 and 8.2.
3. Clean your filter cartridge often and more frequently with heavy bather usage. The filter cartridge should be rinsed with hot water using our **Filter Flosser** to loosen oils and contaminants. Soak the filter overnight in a bucket of warm water using our **Filter Soak** cleanser. Rinse again using our **Filter Flosser**.
4. Add a bottle of **Spa Solution**® every three months.
5. Your spa water should be changed every three to six months depending on bather usage.
6. For information on our compatible products, see our website at www.spa-express.ca

Additional Hints and Tips For Using Spa Solution®

1. Use spa fragrances cautiously. Some are not compatible with this product.
2. For the first week or two, you may experience an organic smell. This simply means **Spa Solution**® has found contaminants and is working harder. This may also suggest your filter requires more frequent cleaning. Check to ensure the underside of the cover has been cleaned. If the odour is still present after 24 hours, add a chlorine based shock.
3. **Spa Solution**® is compatible with ozonators, chlorine and bromine. Add your selected sanitizer as required.
4. Cloudy water may be caused by frequent use, a large number of bathers, lotions, oils, deodorants, sunscreens and other products, or soap residues in bathing suits.

To clear-up cloudy water:

- Ensure spa user's skin and bathing suits are as clean as possible.
 - Ensure the filter is clean.
 - Run the filtration system at least eight hours per day
 - Use water clarifiers or oxidizers to speed-up recovery time
 - Oxidize by running jets on high with the cover off for 35 to 40 minutes.
 - Be patient. The spa water will clear up and does not have to be drained if the water is cloudy. **Spa Solution**® just needs time to do its job.
5. If your source water has a high mineral content, fill your spa with softened water if possible, then bring up total hardness to the 150 to 250 ppm range. If you don't have access to softened water and you see a mineral precipitate form on the sidewalls of your spa, you must use a stain and scale product to aid in mineral retention and avoid component damage.
 6. A low pH is very unusual and indicates that an acidic substance has entered the water or that alkalinity is off. **Spa Solution**® will restore the pH to the range in which it works best once alkalinity is restored. To aid in the recovery of pH, a pH up product can be used.

